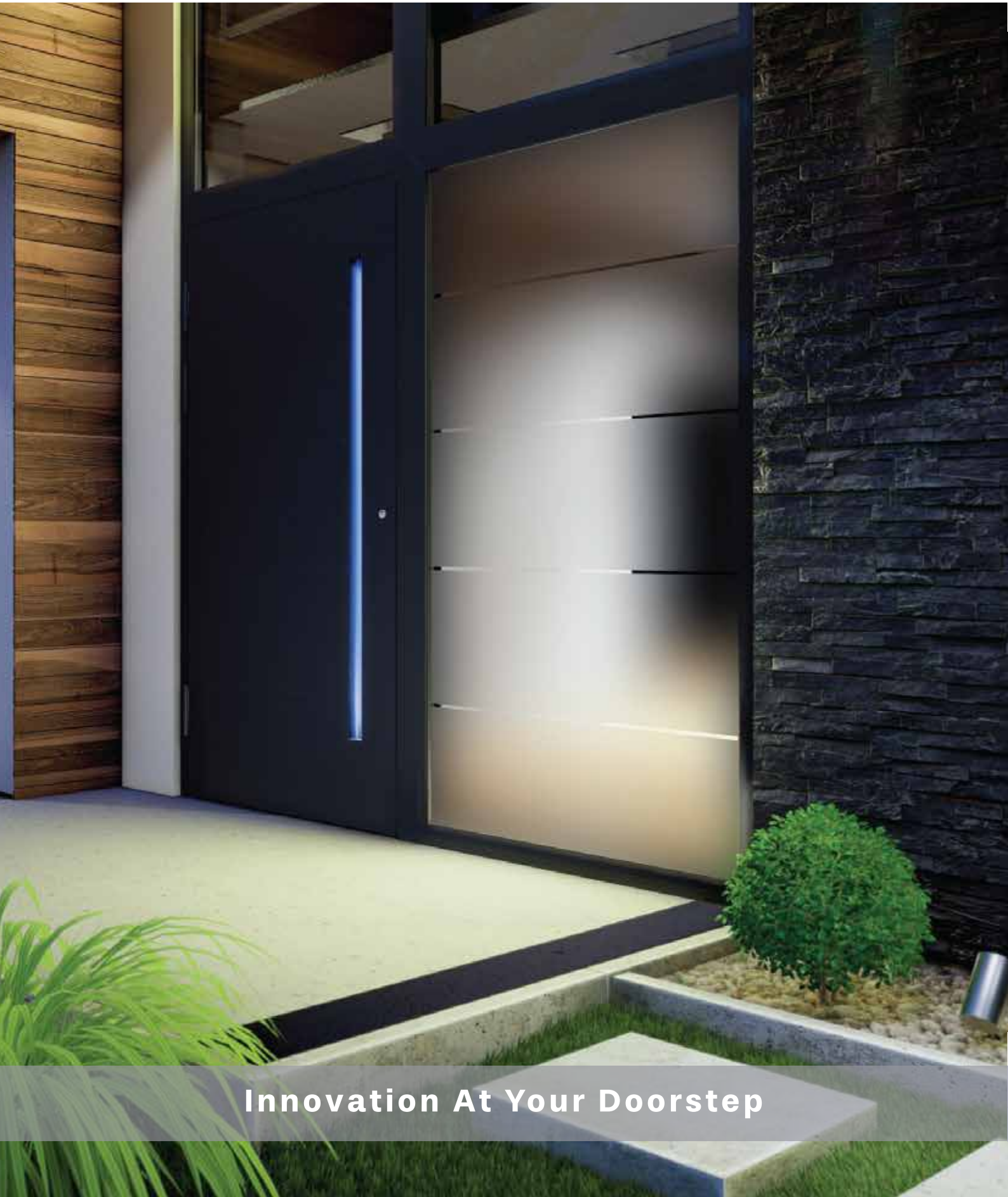


EUROPEAN DOORS

ALUMINUM DOORS



Innovation At Your Doorstep



INDEX

MB-86 SI SYSTEM	5
DOORS	6-14
EXTRA EQUIPMENT	15
ALUMINUM COLORS	16
GLASS PANES	17
HANDLES	18
DOOR CONFIGURATION	19



MB-86 SI SYSTEM

ALUMINUM DOORS



SYSTEM STRUCTURE



77 mm
Installation Depth



$U_w = 0.16 \text{ BTU}/(\text{hft}^2\text{F})$
Thermal Transmittance

The profiles feature a 3-chamber design with a door section depth of 77 mm, incorporating a polyamide thermal break reinforced with fiberglass for enhanced insulation.

77 mm thick, double-sided aligned batch panel.



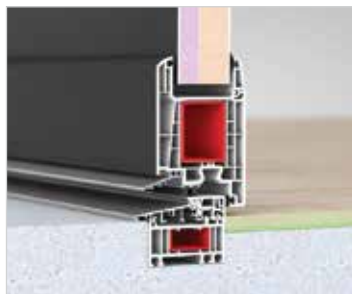
Standard:

- 3-Point espagnolette locking system for enhanced security and smooth operation.
- 3 two-winged hinges designed for stable and reliable door support.
- 3 roller hinges specifically for two-sided aligned panels, ensuring smooth and balanced movement.
- Energy-efficient glass with a U_g value of $1.1 \text{ W}/(\text{m}^2\text{K})$, providing excellent insulation.
- Warming insert for additional thermal efficiency and comfort.
- Matt finish in RAL 7016 (anthracite grey) and RAL 9016 (traffic white) for a modern and sleek appearance.
- Threshold with a thermal break to reduce heat transfer and enhance energy savings.
- Sturdy aluminum handle for durability and easy use.
- Mounting insert for convenient and secure installation.

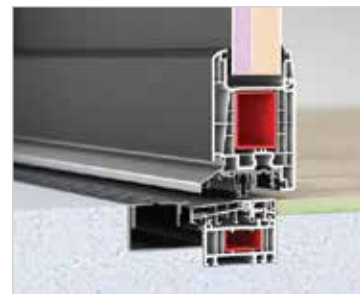
THRESHOLDS



Aluminum Threshold with Thermal Break



Combi Threshold



Zero Threshold



FLORIDA INOX
L | R



FLORIDA INOX
L | R



FLORIDA INOX
L | R



FLORIDA INOX
L | R



FLORIDA INOX
L | R



FLORIDA INOX
L | R



FLORIDA INOX
L | R



FLORIDA INOX
L | R



FLORIDA INOX
L | R



FLORIDA INOX
L | R



FLORIDA INOX
L | R



FLORIDA INOX
L | R



FLORIDA INOX
L | R



FLORIDA INOX
L | R



FLORIDA INOX
L | R



FLORIDA INOX
L | R



FLORIDA INOX
L | R



FLORIDA INOX
L | R



FLORIDA INOX
L | R



FLORIDA INOX
L | R



FLORIDA INOX
L | R



FLORIDA INOX
L | R



FLORIDA INOX
L | R



FLORIDA INOX
L | R



FLORIDA INOX
L|R



FLORIDA INOX
L|R



FLORIDA INOX
L|R



FLORIDA INOX
L|R



FLORIDA INOX
L|R



CONNETICUT 1



CONNETICUT 2



CONNETICUT 3



CONNETICUT 4



CONNETICUT 5



CONNETICUT 6



CONNETICUT 7



CONNETICUT 8



CONNETICUT 9



CONNETICUT 10



CONNETICUT 11



CONNETICUT 12



CONNETICUT 13



CONNETICUT 14



VIRGINIA 1



VIRGINIA 2



VIRGINIA 3



VIRGINIA 4



VIRGINIA 5



VIRGINIA 6



VIRGINIA 7



VIRGINIA 8



VIRGINIA 9



VIRGINIA 10



KENTUCKY 1



KENTUCKY 2



KENTUCKY 3



KENTUCKY 4



KENTUCKY 5



KENTUCKY 6



KENTUCKY 7



KENTUCKY 8



KENTUCKY 9



KENTUCKY 10



KENTUCKY 11



KENTUCKY 12



KENTUCKY 13



KENTUCKY 14



KENTUCKY 15



KENTUCKY 16



KENTUCKY 17



KENTUCKY 18



KENTUCKY 19



ALASKA 1



ALASKA 2



ALASKA 3
L|R



ARIZONA 1



ARIZONA 2



CALIFORNIA 1
L|R|C



CALIFORNIA 2
L|R|C



FLORIDA 1
L|R



FLORIDA 3
L|R



FLORIDA ALF4S



HAWAII 1



HAWAII 4



HAWAII 5
L|R



HAWAII 6
L|R



MONTANA 1



MONTANA 4



MONTANA WOOD



NEBRASKA 1
L|R|C



NEW YORK 1
L|R|C



NEW YORK 2
L|R



PENNSYLVANIA 2
L|R



PENNSYLVANIA 4



PENNSYLVANIA 5



TEXAS
L|R|C



TEXAS WOOD
L | R



WASHINGTON 1



WASHINGTON 2



WASHINGTON 3
L | R



WASHINGTON 3
L | R



WASHINGTON
POCKET L | R



WASHINGTON
WOOD L | R



WASHINGTON
ZERO



KENTUCKY 20

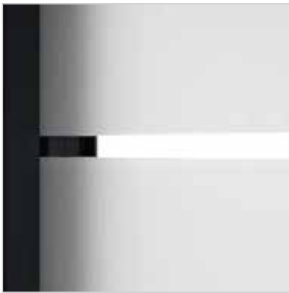


KENTUCKY 21



KENTUCKY 22

EXTRA EQUIPMENT



SANDBLASTED GLASS



CONCEALED HINGES

Invisible when the door is closed.



ANTI-THEFT BOLT

Only available for batch panels.



CUT DESIGN

Panel with cutters of 6 mm and more width (12 as standard).



RING ROSETTE

Available with emergency function insert.



STAINLESS STEEL INOX



DAY/NIGHT MODE

Allows you to switch between day and night mode. Allowing easier access into home when needed.



STAINLESS STEEL ROSETTE

SMART HOME ACCESS

Somfy TaHoma® Switch

TaHoma switch is the central hub that connects and controls the smart home ecosystem – powering the TaHoma app for homeowners and giving them complete control, no matter their preferred smart home ecosystem.

Open and close doors remotely or on-site with Tahoma Somfy! This system automatically adjusts all your home devices to meet your needs. With a smartphone, you can monitor and access your home systems anytime, day or night.



E-Key Keyboard (Black)



E-Key Keyboard (Steel)



SOMMER Reader



E-KEY Fingerprint Reader



E-KEY Fingerprint Reader



IDENCOM Keyboard



INDECOM RFRID Reader



INDECOM Fingerprint Reader



BLUETOOTH IDENCOM Keyboard

ALUMINUM COLORS

COLOR PALETTE | RAL and Aluprof Color Collection



ILLUSTRATIVE SMOOTH MATT PAINTS



RAL 3004



RAL 6005



RAL 7001



RAL 7016



RAL 8019



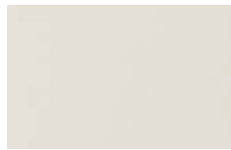
RAL 9005



RAL 9006



RAL 9007



RAL 9016

PEARL COLORS

1035 | 1036 | 2013 | 3032 | 3033 | 4011 | 4012 | 5025 | 5026 | 6035 | 6036 | 7048 | 8029 | 9022 | 9023
possible to make with an extra charge.

ILLUSTRATIVE METALLIC PAINTS WITH STRUCTURE



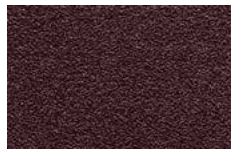
METALLIC WHITE



METALLIC BEIGE



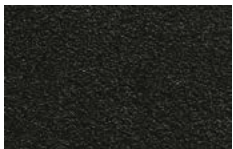
METALLIC BROWN



METALLIC RED



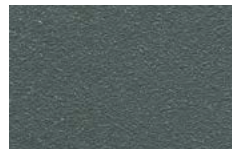
RUSTY BROWN



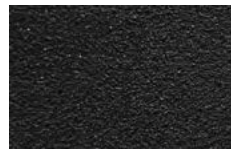
METALLIC GREY



MODERN GREY



METALLIC ASH

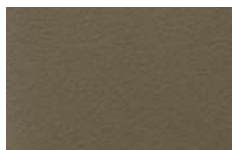


METALLIC BLACK

ILLUSTRATIVE SPECIAL EFFECT PAINTS



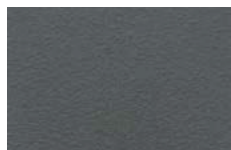
ANODIC SILVER



ANODIC OLIVE



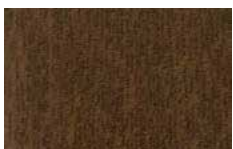
GOLDEN OAK



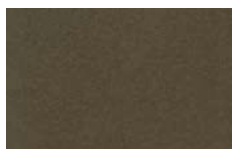
ANODIC GREY



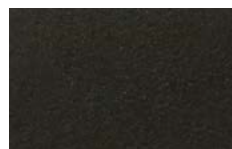
ANODIC
PLATINIUM



NUT



ANODIC BRONZE



ANODIC BROWN



WINCHESTER

UNAVAILABLE RAL COLORS

1035 | 1036 | 2013 | 3032 | 3033 | 4011 | 4012 | 5025 | 5026 | 6035 | 6036 | 7048 | 8029 | 9022 | 9023 |
1026 | 2005 | 2007 | 3024 | 3026 | 6038.

GLASS PANES

We offer many types of glass panes that are characterised by the highest quality of workmanship. Choose panels for your doors that will meet your expectations and give your interior unique character.



MATTE



STRIPPED
SANDBLASTED GLASS



REFLECT BROWN
6 MM



REFLECT BLUE
6 MM



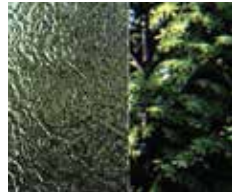
FLOAT
4, 6, 8, 10 M



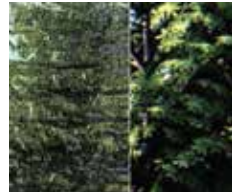
LAMINATED GLASS



CHINCHILLA
ORNAMENT



DELTA
ORNAMENT



SILVIT
ORNAMENT



CATHEDRAL
ORNAMENT



MASTER CARRE
ORNAMENT



RAIN
ORNAMENT



ANTISOL GREEN



ANTISOL BROWN



ANTISOL GREY



ANTISOL BLUE



MIRASTAR

MUTIN BARS

Create an elegant and unique look for your doors, these mutin bars can be used on all of our doors.

PVC Glued on Mutin Bars



Glued on muntin bar in widths of 27 mm, 45 mm or 65 mm.

Available in our colour palette.

Internal Aluminum Mutin Bars



Internal muntin bars in widths of 8 mm, 18 mm, 26 mm or 45 mm. Available colours: white, gold, silver, golden oak, dark oak, mahogany, nut, macore, winchester, and RAL 8022.

HANDLES

PULL HANDLES



**Q10
WITH OPTIONAL FINGER
PRINT READER**

Only available for doors aligned on both sides only.
Available lengths: 120 cm and 180 cm.



QA10

Only available for doors aligned on both sides only.

RAL 9005.
Available lengths: 160 cm.



P10D

Only available for doors aligned on both sides only.

Available lengths: 120 cm, and 160 cm.



KA1

Pull handle with an option of backlighting in warm white or RGB colors. Only available for doors aligned on both sides only.

Available lengths: 160 cm.



Q45RX

Available lengths: 80 cm, and 120 cm.



Z1L

Available lengths ranging from: 100 to 250 cm.



P45 AND P45L

Available lengths: P45: 58 cm | P45 L: 120 and 180 cm.

HANDLES



R32 WITH DIVIDED PLATE



R32



35A | 1200



35A | 1200 G1



30A | 1006 G1 KNOB

Also available in white, silver, olive and brown.



30A | 1006 HANDLE

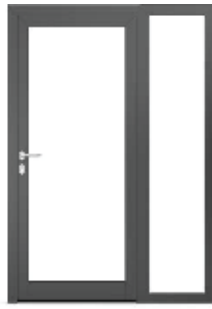
Also available in white, silver, olive and brown.

DOOR CONFIGURATIONS

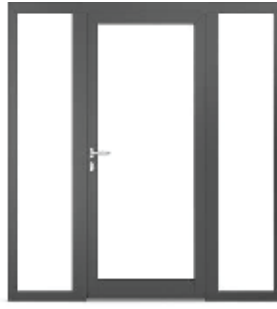
SIDELIGHT CONFIGURATIONS



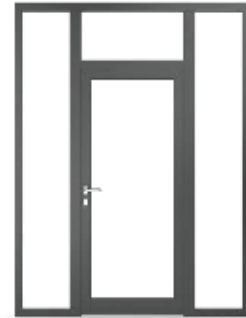
OPTION 1



OPTION 2



OPTION 3



OPTION 4



OPTION 5



OPTION 6



OPTION 7

EXAMPLE OF MULLION PATTERNS



EXAMPLE NO. 1



EXAMPLE NO. 2



EXAMPLE NO. 3



EXAMPLE NO. 4



EXAMPLE NO. 5



EXAMPLE NO. 6



EXAMPLE NO. 7



EXAMPLE NO. 8



EXAMPLE NO. 9



EXAMPLE NO. 10



EXAMPLE NO. 11



EXAMPLE NO. 12

info@patkowskiconstruction.com
www.patkowskiconstruction.com



visit our location:
1775 Rogers Ave
San Jose, CA 95112



650-863-2808

We speak English and Polish.

